

A.M.



GATTI  
INC



FOR  
QUALITY,  
PERFORMANCE  
& DELIVERY  
YOU CAN  
COUNT  
ON

***Waterjet Orifice  
Assemblies***

***Multi-Orifice  
Nozzle Bodies***

***Adapters***

***High-Performance  
Waterjet  
Assemblies***

524 Tindall Ave. Trenton, NJ 08610

P: 609-396-1577 · F: 609-695-4339

**1-800-882-0105**

**[www.gattiam.com](http://www.gattiam.com)**

# STANDARD WATERJET ORIFICE ASSEMBLIES

TYPE 2720 — 60°  
TYPE 2908 — 48°



- "Button Style" orifice assembly with .270" head diameter
- Fully compatible with most commonly used orifice housings
- Sapphire orifice sizes .003" - .050" available
- Gatti Type 2720/2908 plugs available

TYPE 2822



- "Button Style" orifice assembly with .375" head diameter
- Fully compatible with most commonly used orifice housings
- Sapphire orifice sizes .003" - .050" available
- Gatti Type 2822 plug available

TYPE 2936



- "Button Style" orifice assembly suitable for use in abrasive cutting heads
- Fully compatible with most commonly used orifice housings
- Sapphire orifice sizes .003" - .050" available

TYPE 3106



- "Button Style" orifice assembly with compact design
- Fully compatible with most commonly used orifice housings
- Sapphire orifice sizes .003" - .050" available

TYPE 2872  
TYPE 3121



- Small orifice assembly for use at pressures less than 40,000 psi.
- Sapphire orifice sizes .003" - .040" available
- 2872: screw driver slot
- 3121: 2mm or 5/64" hex key slot
- M4 x 0.5 thread

TYPE 2869



- Sapphire orifice sizes .003" - .032"
- 1/4" hex key slot
- 1/4-20 thread

TYPE 2862



- Sapphire orifice sizes .003" - .050"
- 7/32" hex key slot
- 7/16-20 thread

# PATENTED HIGH-PERFORMANCE WATERJET ORIFICE ASSEMBLIES

TYPE 3024



*Our most popular high-performance nozzle!*

- Produces Gatti-patented high-performance waterjet stream
- Sapphire orifice sizes .003" - .055"
- 3/8" hex head
- 3/8-24 thread

TYPE 3261



- Produces Gatti-patented high-performance waterjet stream
- Sapphire orifice sizes .003" - .050"
- 5mm hex key slot
- M10 x 1.5 thread

.010" Patented  
Standard High-  
Diamond performance  
Orifice orifice  
assembly  
.010"

TYPE 3054



- Produces Gatti-patented high-performance waterjet stream
- Sapphire orifice sizes .003" - .032"
- Screw driver slot
- 10-32 thread



50,000 psi —  
No Additives to Water

TYPE 3035  
TYPE 3026



- Produces Gatti-patented high-performance waterjet stream
- Sapphire orifice sizes .003" - .040"
- 1/4" hex head
- 3035: 1/4-20 thread
- 3026: 1/4-28 thread

TYPE 3076



- Produces Gatti-patented high-performance waterjet stream
- Sapphire orifice sizes .003" - .060"
- 7/16" hex head
- 7/16-20 thread

TYPE 3349



- Produces Gatti-patented high-performance waterjet stream
- Sapphire orifices available in select sizes between .019" - .151"
- 9/16" hex head
- 9/16-18 thread

# SURFACE CLEANING CARRIERS



TYPE 3245

- Titanium 5-Jet Carrier
- Accepts Gatti Type 3024 high-performance orifice assemblies (not included)
- 3" head diameter
- Provides large area coverage for lighter coating removal applications



TYPE 3126  
TYPE 3226

- Stainless (3126) or Titanium (3226) 4-Jet Carrier
- Accepts Gatti Type 3024 high-performance orifice assemblies (not included)
- 2" head diameter
- More aggressive than 3245 carrier
- Popular multi-application surface cleaning carrier



TYPE 3201  
TYPE 3224

- Stainless (3201) or Titanium (3224) 4-Jet Carrier
- Accepts Gatti Type 3024 high-performance orifice assemblies (not included)
- 1.5" head diameter
- *Moderately* aggressive tight jet pattern used for hard surface coating removal



TYPE 3282  
TYPE 3308

- Stainless (3282) or Titanium (3308) 3-Jet Carrier
- Accepts Gatti Type 3024 high-performance orifice assemblies (not included)
- 1.5" head diameter
- *Very* aggressive 1" jet pattern for very hard or heavily built-up surface coating removal



TYPE 3117

- Stainless mini-surface cleaning 2-Jet Carrier
- Accepts Gatti Type 3026 high-performance orifice assemblies (not included)
- 0.8" head diameter



TYPE 3430

- Stainless mini-surface cleaning 4-Jet Carrier
- Accepts Gatti Type 3054 high-performance orifice assemblies (not included)
- 0.8" head diameter



TYPE 3432

- Stainless mini-surface cleaning 4-Jet Carrier
- Accepts Gatti Type 3026 high-performance orifice assemblies (not included)
- 1.062" head diameter

# HIGH-PERFORMANCE NOZZLE ADAPTERS

TYPE 3183



TYPE 3210



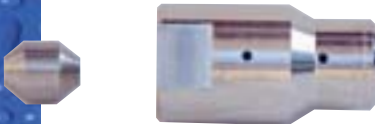
TYPE 3158



TYPE 3205



TYPE 3161



- Accepts Gatti Type 3026 high-performance orifice assembly (not included)
- Includes Type 3118 seat
- Connects to 3/8-24 supply tube

- Accepts Gatti Type 3024 high-performance orifice assembly (not included)
- Includes Type 3118 seat
- Connects to 3/8-24 supply tube

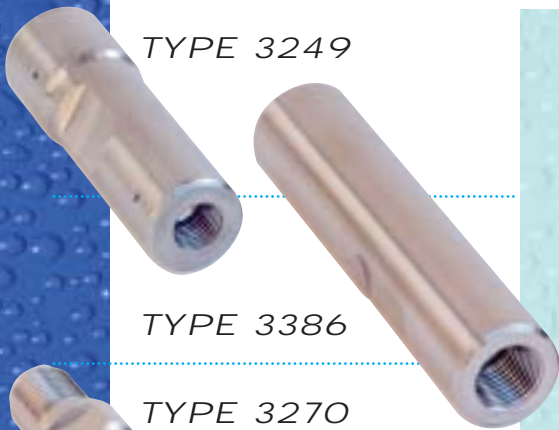
- Accepts Gatti Type 3026 high-performance orifice assembly (not included)
- Includes Type 3118 seat
- Connects to 3/8-26 LH supply tube

- Accepts Gatti Type 3024 high-performance orifice assembly (not included)
- Includes Type 3206 seat
- Connects to 5/8-18 supply tube

- Accepts Gatti Type 3024 high-performance orifice assembly (not included)
- Includes Type 3159 seat
- Connects to 9/16-18 LH supply tube

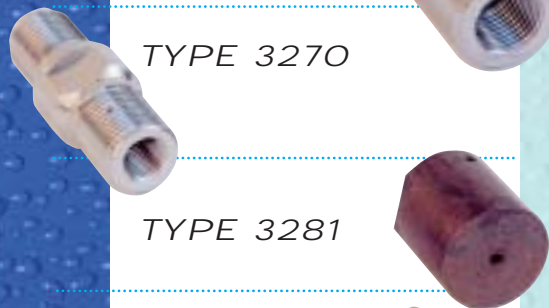
# DEMOLITION NOZZLES, TIPS, & SEALS

TYPE 3249



TYPE 3386

TYPE 3270



TYPE 3281

TYPE 3218

- Accepts Gatti Type 3076 high-performance orifice assembly (not included)
- Includes button seal

- Accepts Gatti Type 3349 high-performance orifice assembly for higher flow applications (not included)
- Includes button seal

- Couples Gatti Type 3024 high-performance orifice assembly, stainless heat treated wear cap (3281), and button seal (3218) to a spray bar assembly.

- Stainless steel heat-treated wear cap

- Button Seal

# LARGE DIAMETER SURFACE CLEANING MANIFOLDS

## TYPE 3300



- 10" Cleaning width
- This 9-Jet surface cleaning assembly is excellent for jobs that require selective coating removal. Common applications are road striping and airport runway marking removal, among others. Accepts both Gatti Type 3076 and 3024 high-performance orifice assemblies (not included)



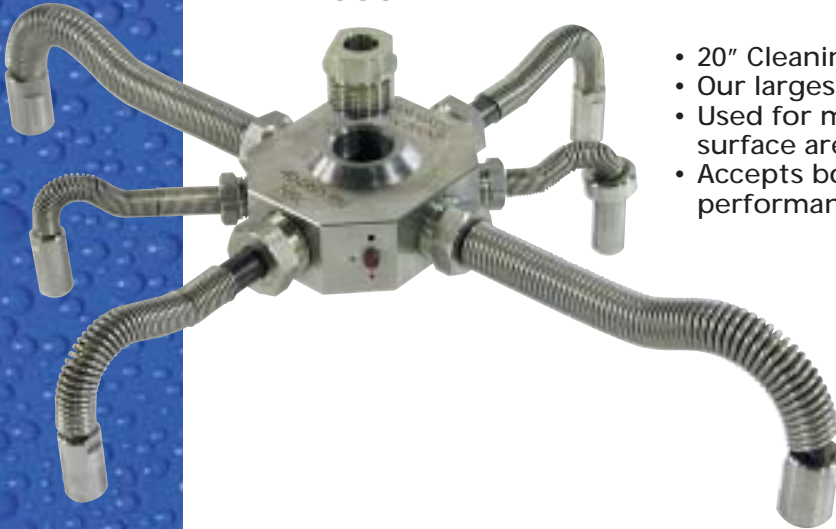
## TYPE 3385



- 14" Cleaning width
- Our most aggressive spray bar assembly has the outer four orifice assemblies angled outward for improved coating removal efficiency.
- Used in applications where the underlying substrate will not be damaged by coating removal process.
- Accepts both Gatti Type 3076 and 3024 high-performance orifice assemblies (not included)



## TYPE 3332



- 20" Cleaning width
- Our largest spray bar assembly
- Used for moderately difficult coating removal on large surface areas.
- Accepts both Gatti Type 3076 and 3024 high-performance orifice assemblies (not included)

